

Service
Service
Service



Service Manual



CONTENTS

Block diagram 1-1
 Wiring diagram 2-2

Display Board
 circuit diagram 3-1
 layout diagram 3-2...3-3

Main Board
 circuit diagram 4-1...4-2
 layout diagram 4-3...4-4

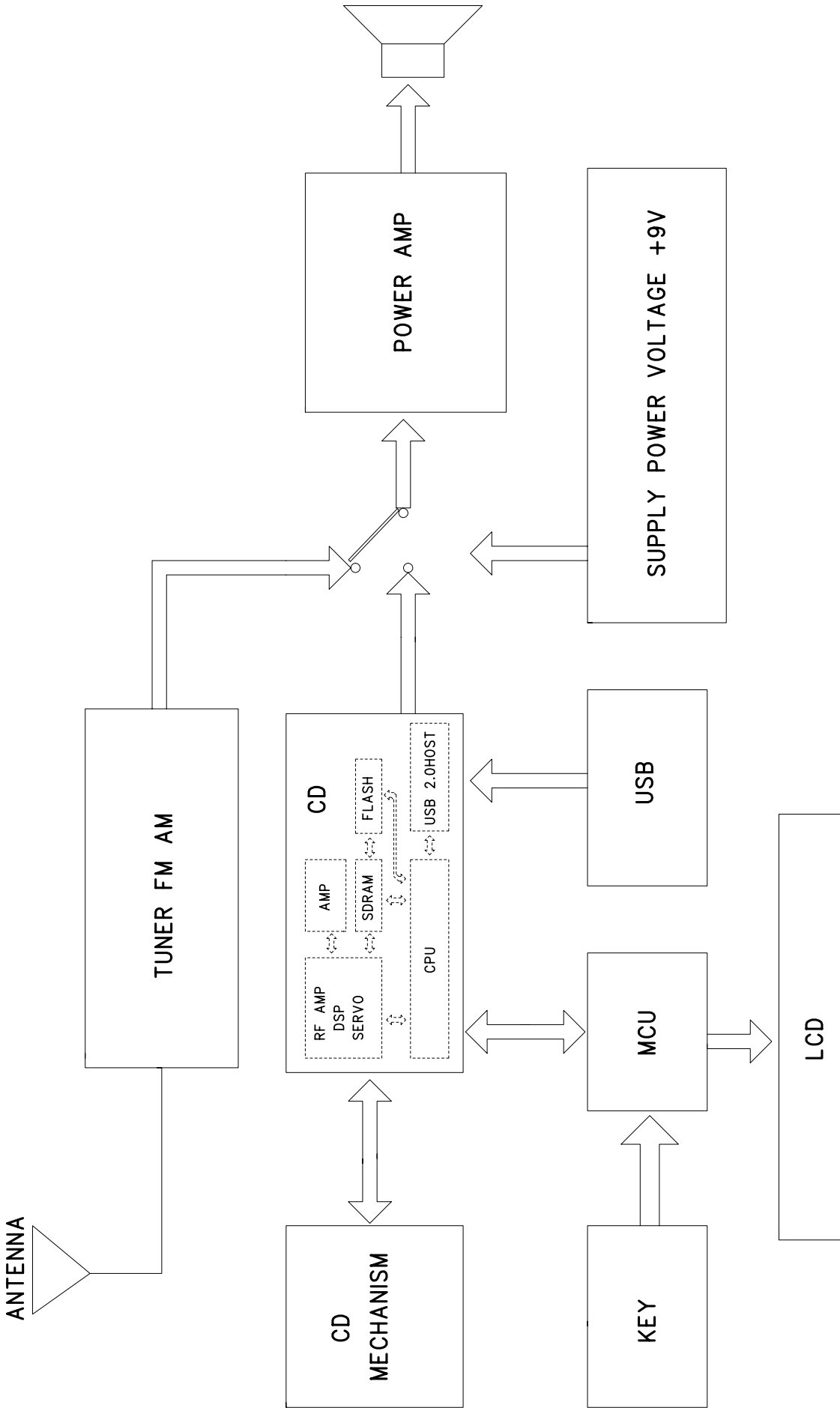
CD Board
 circuit diagram 5-1...5-5
 layout diagram 5-6

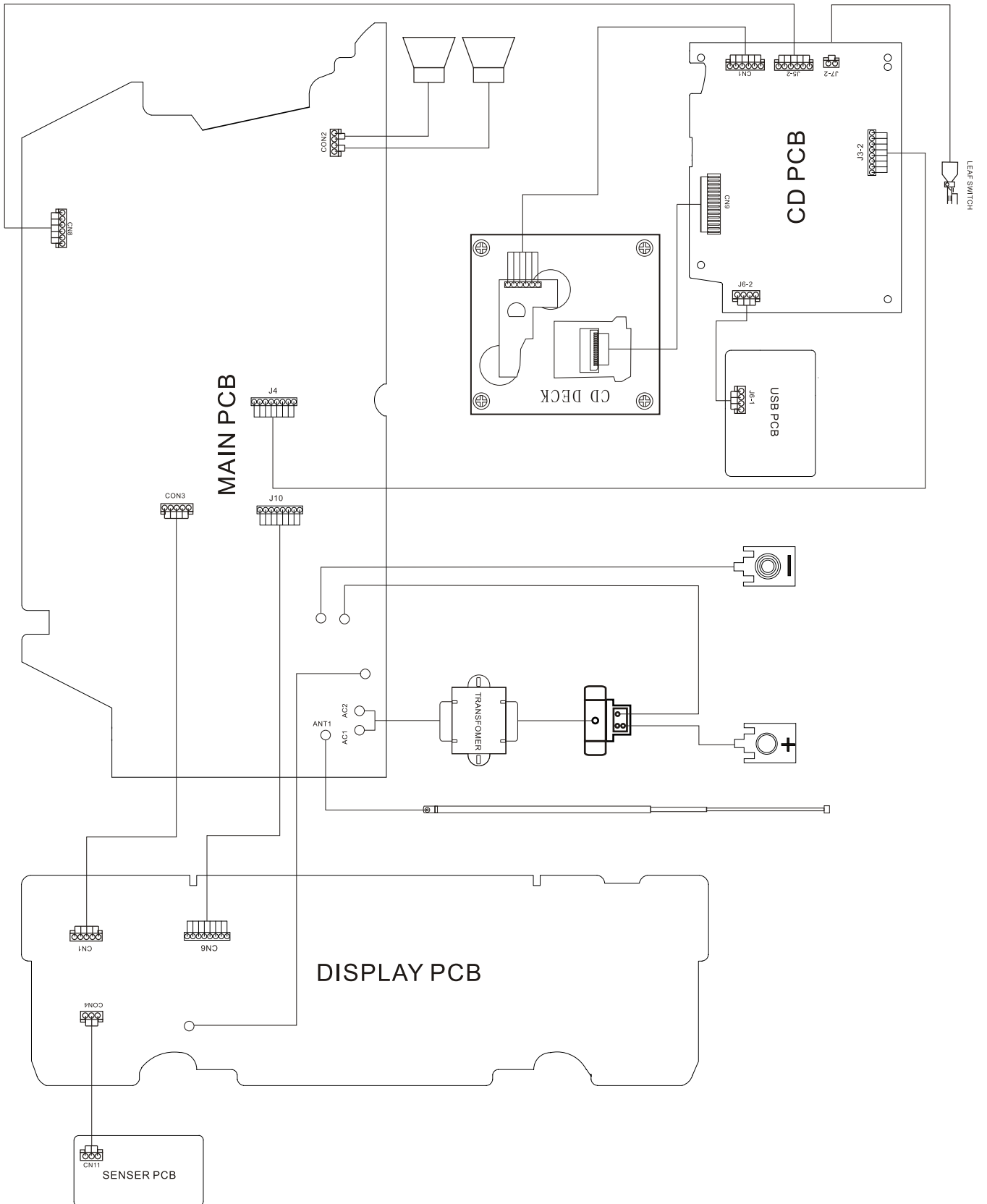
Exploded view diagram 6-1

Service parts list 7-1

© Copyright 2006 Philips Consumer Electronics B.V. Eindhoven, The Netherlands
 All rights reserved. No part of this publication may be reproduced, stored in a retrieval system or transmitted, in any form or by any means, electronic, mechanical, photocopying, or otherwise without the prior permission of Philips.

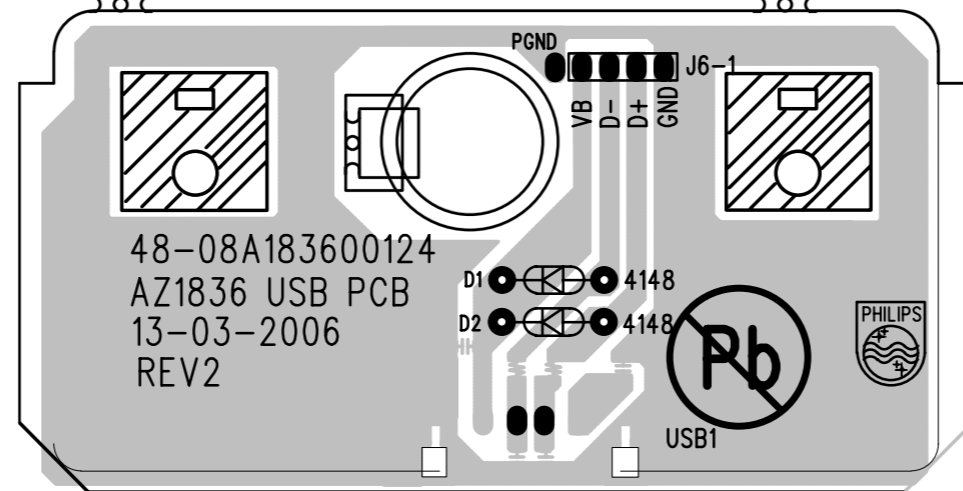
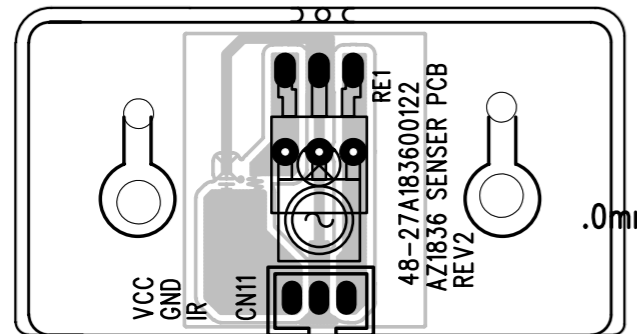
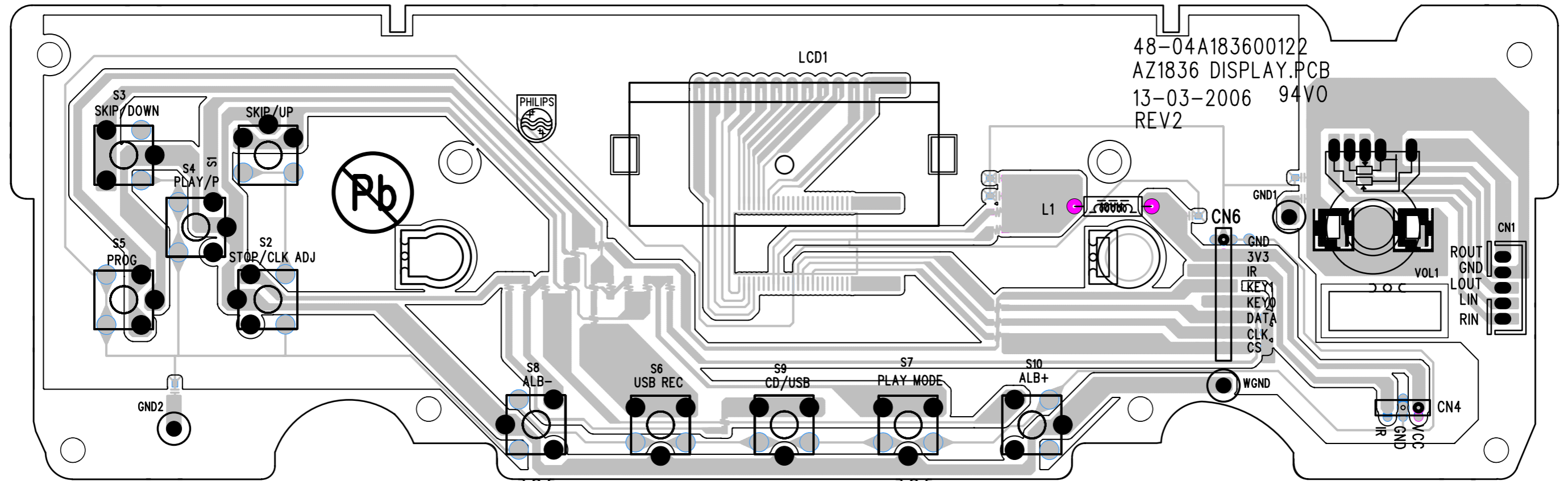




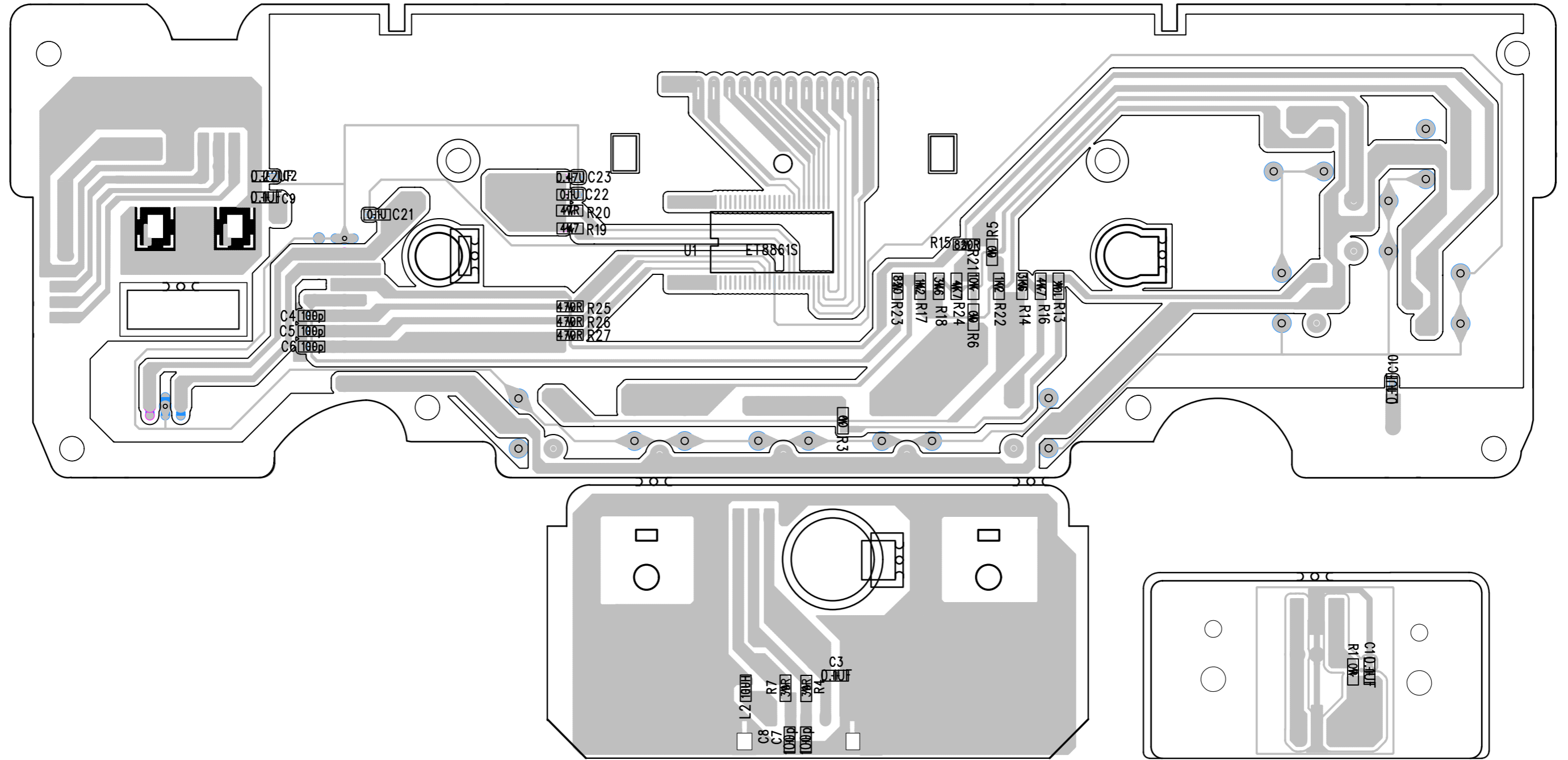


LAYOUT DIAGRAM - DISPLAY BOARD

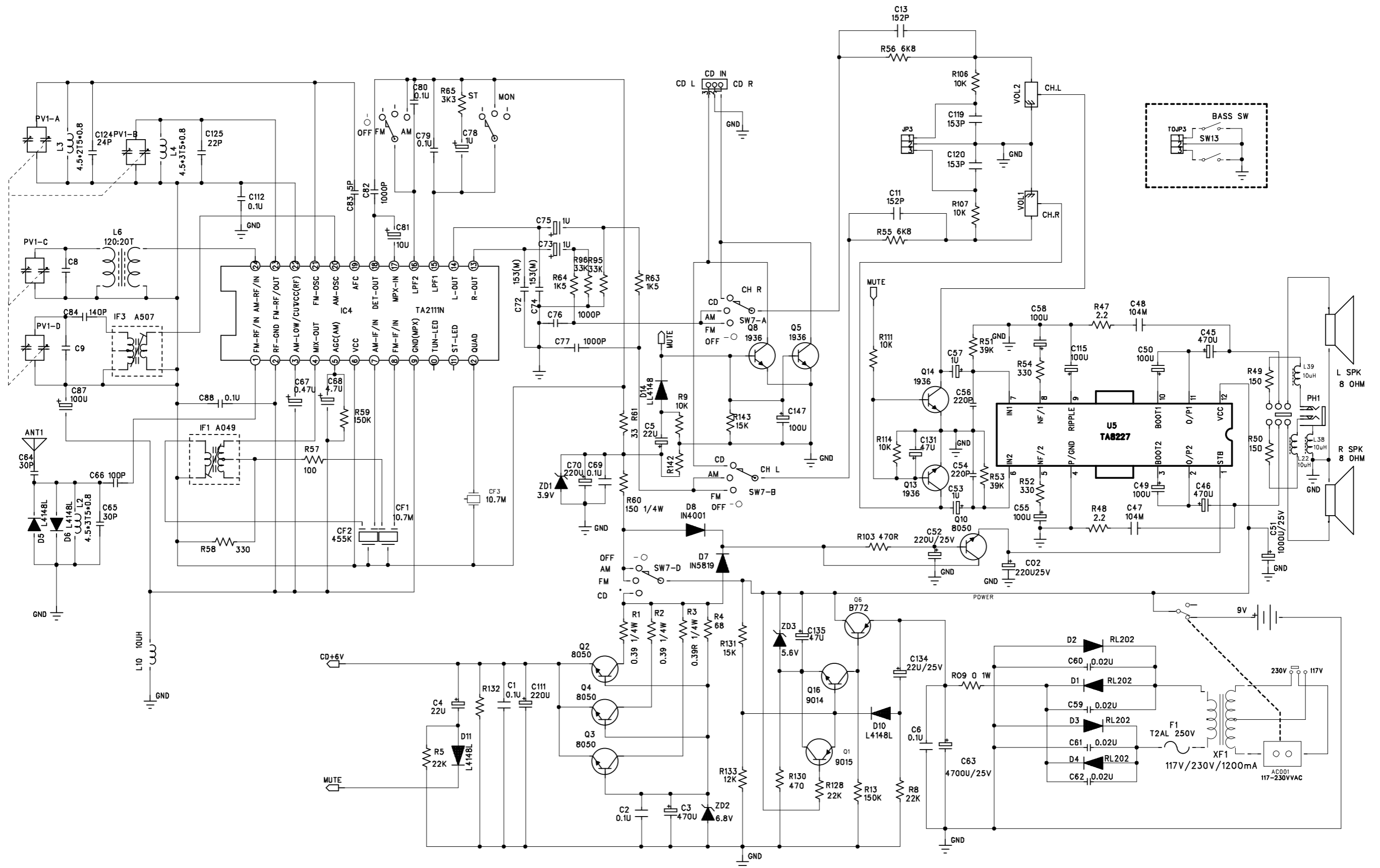
48-04A183600122
AZ1836 DISPLAY.PCB
13-03-2006 94V0
REV2



LAYOUT DIAGRAM - DISPLAY BOARD

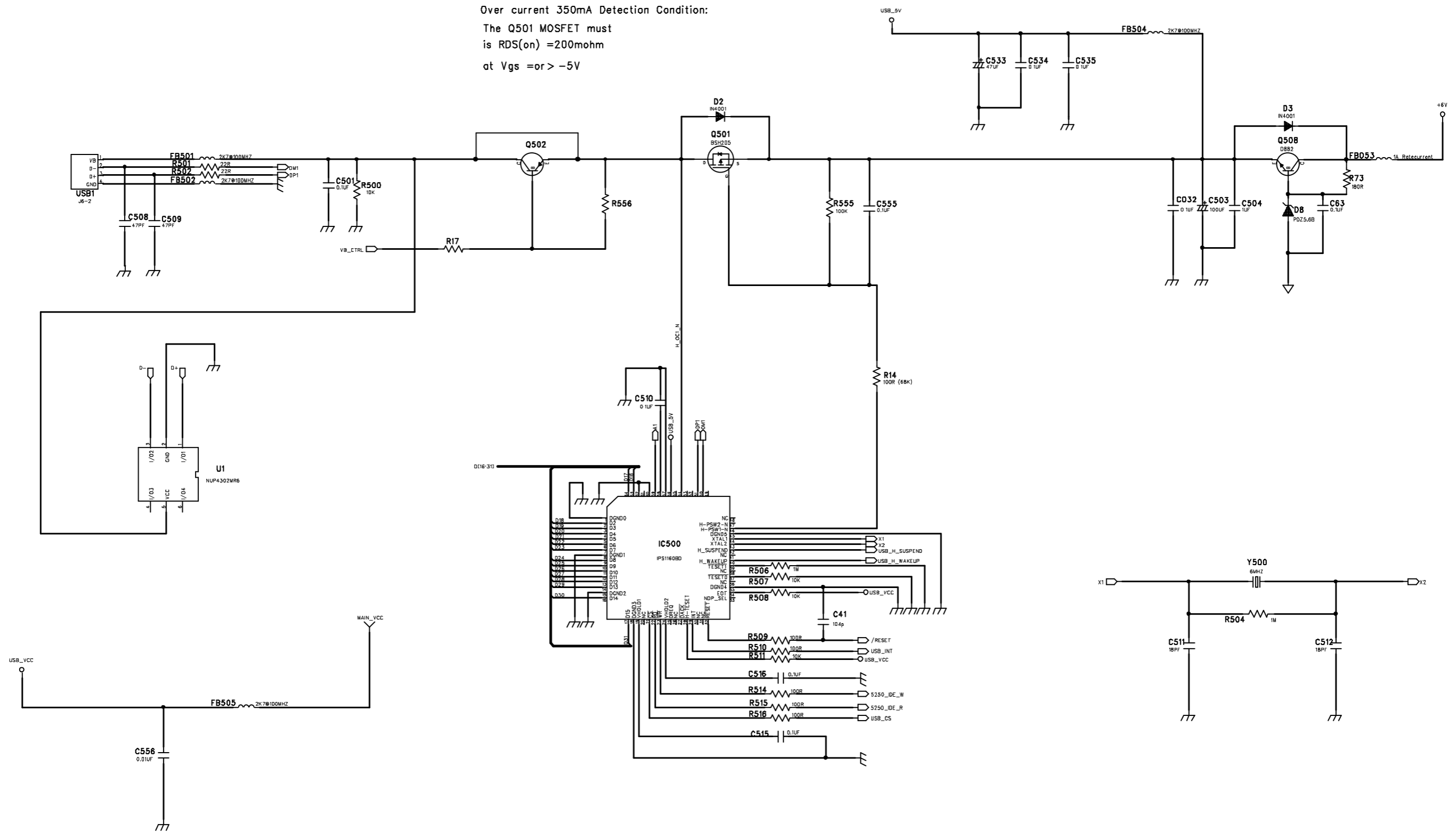


CIRCUIT DIAGRAM - MAIN BOARD PART 1

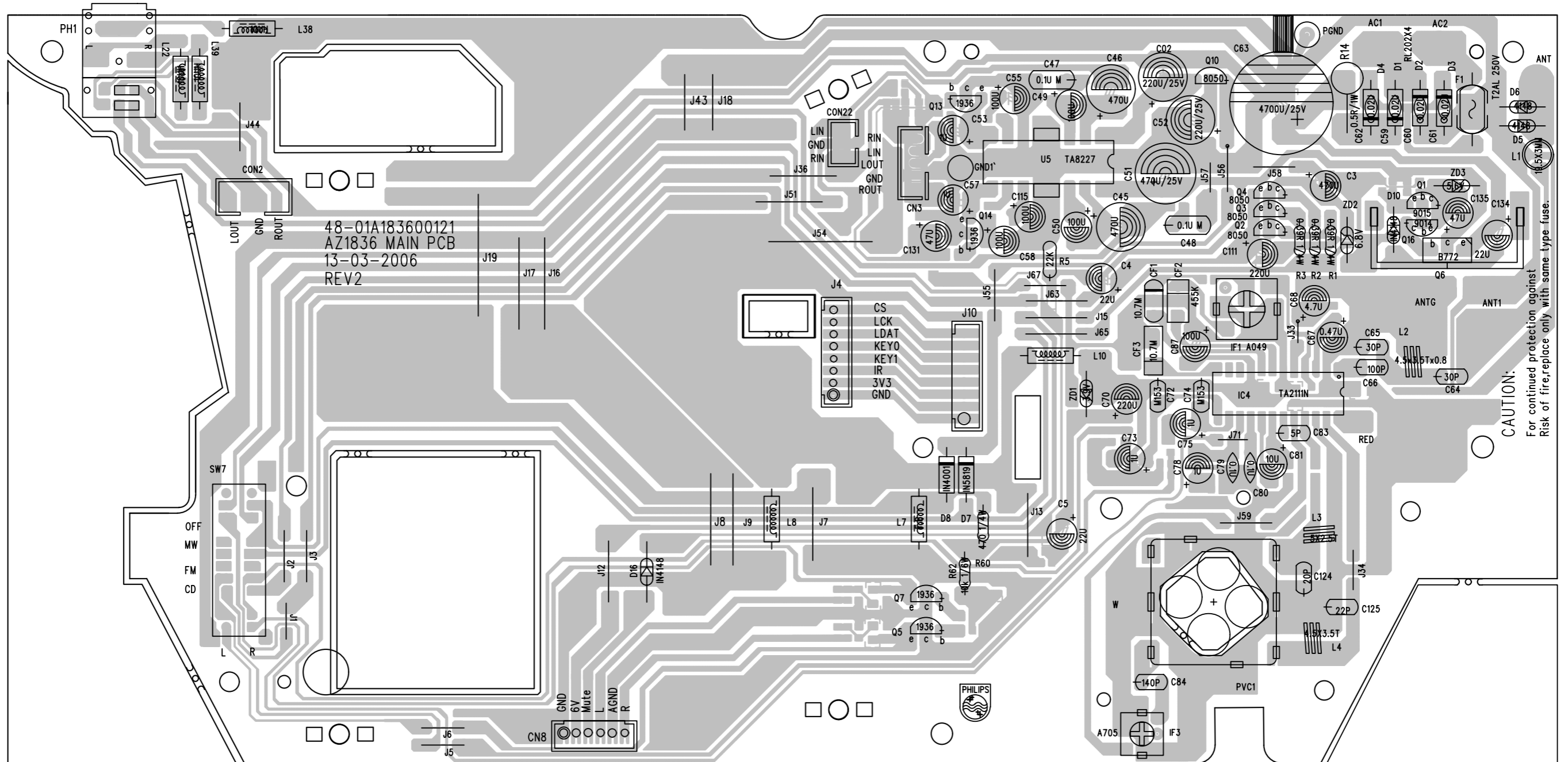


CIRCUIT DIAGRAM - MAIN BOARD PART 2

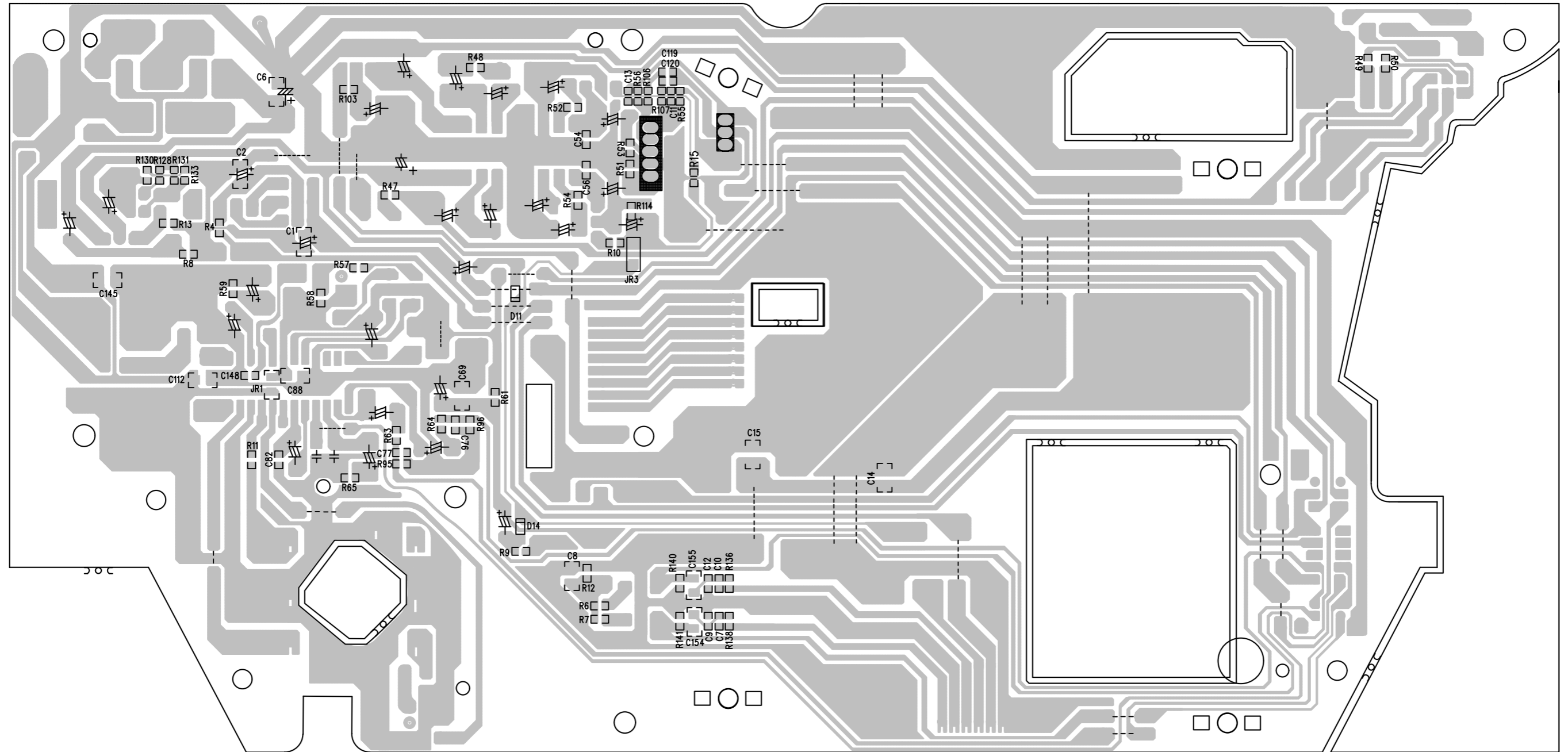
Over current 350mA Detection Condition:
 The Q501 MOSFET must
 is $R_{DS(on)} = 200\text{mohm}$
 at $V_{gs} = or > -5V$



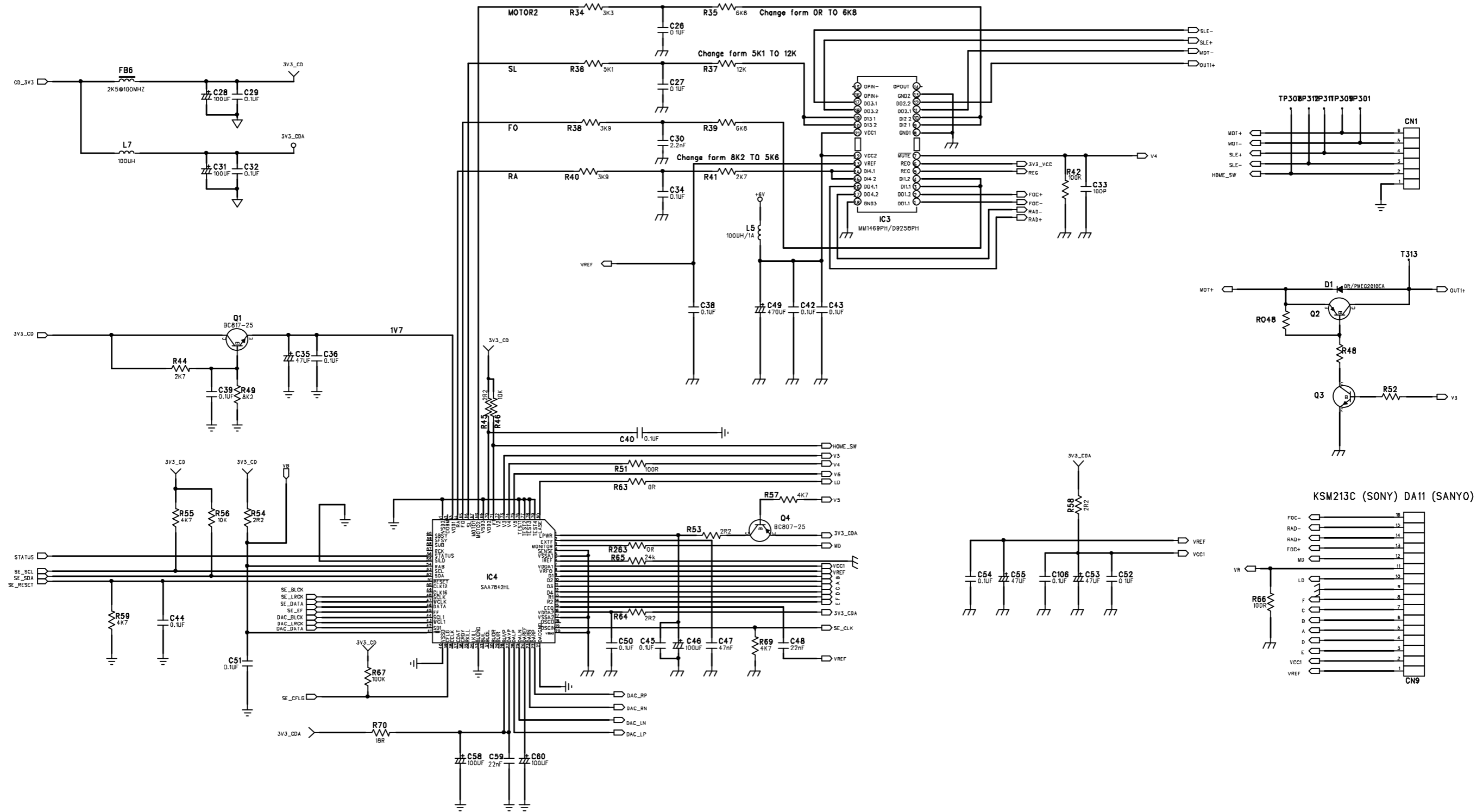
LAYOUT DIAGRAM - MAIN BOARD
COMPONENT SIDE



LAYOUT DIAGRAM - MAIN BOARD
COPPER SIDE



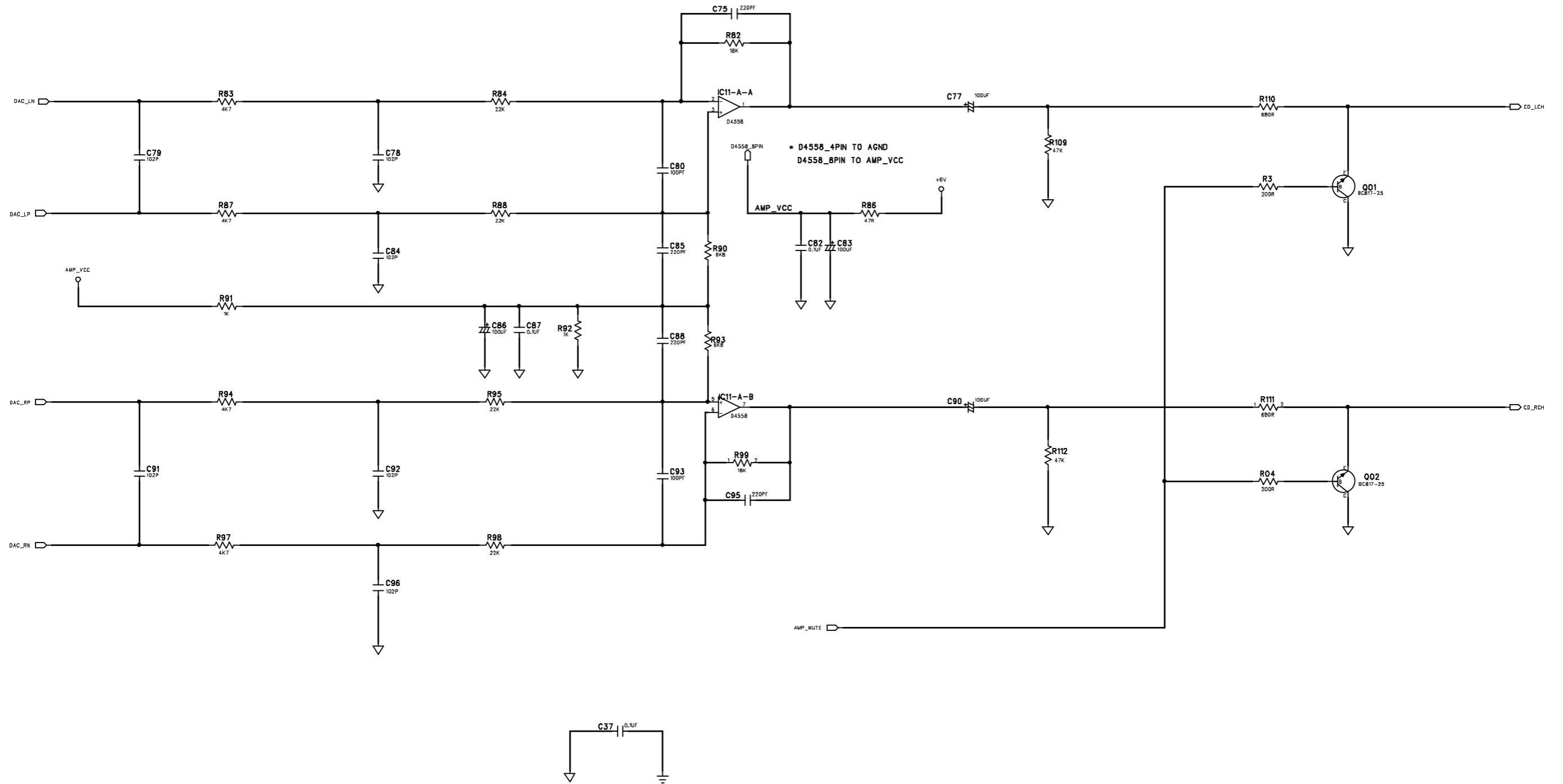
CIRCUIT DIAGRAM - CD BOARD PART 2



CIRCUIT DIAGRAM - CD BOARD PART 3

Notes:

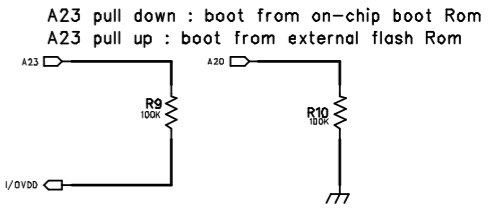
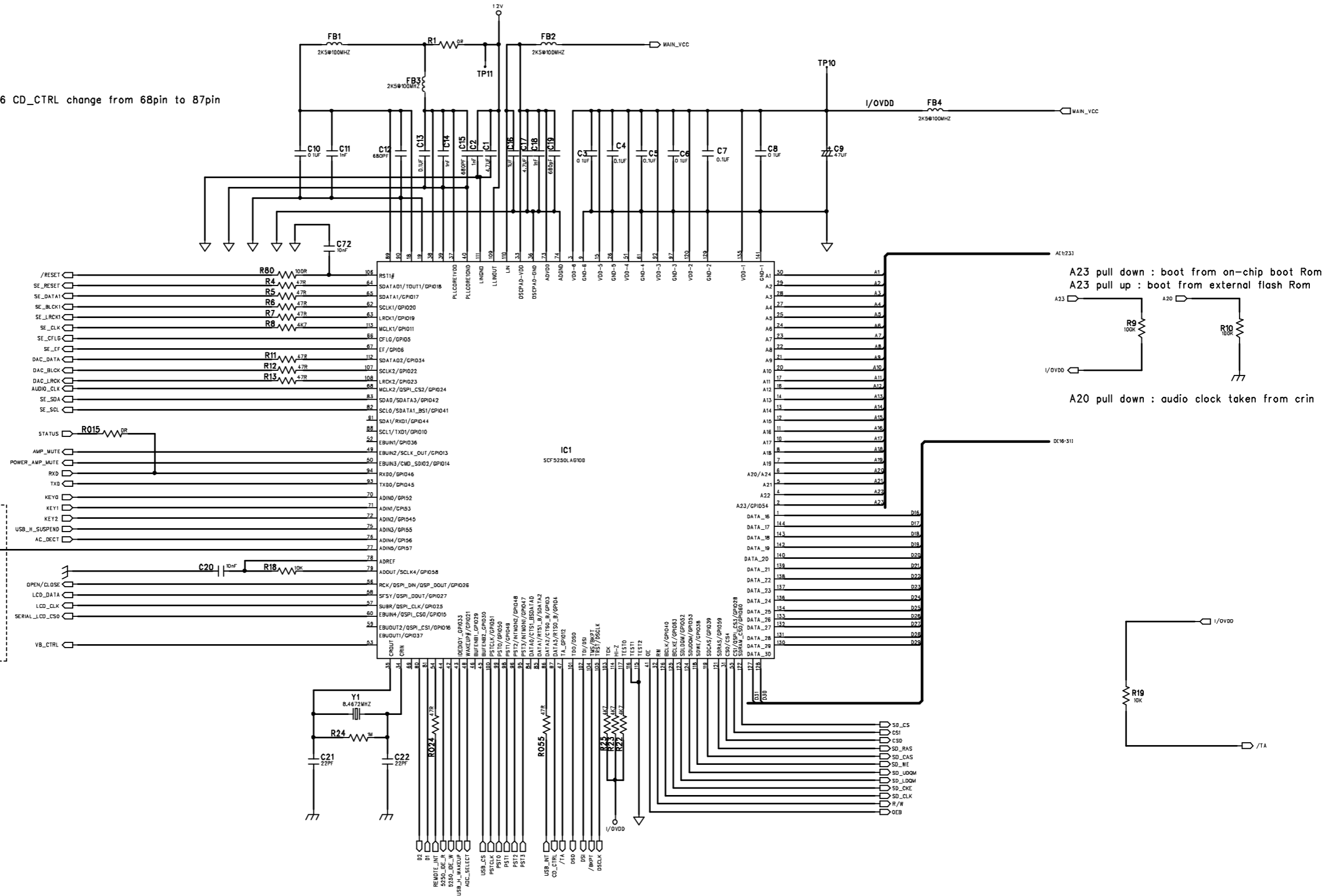
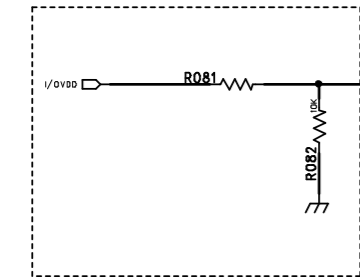
The C79,C91 must be placed as near to the CD18 as possible



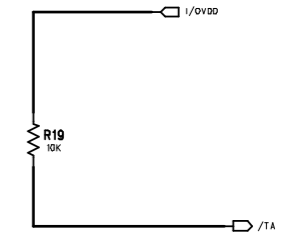
CIRCUIT DIAGRAM - CD BOARD
MP3 PART 1

difference with AZ1836 CD_CTRL change from 68pin to 87pin

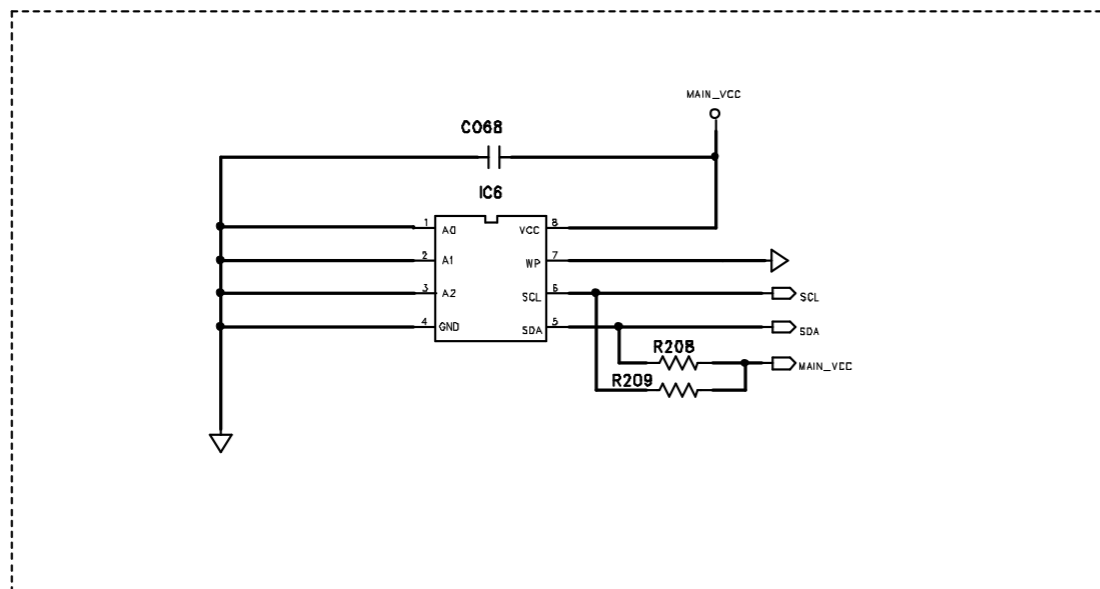
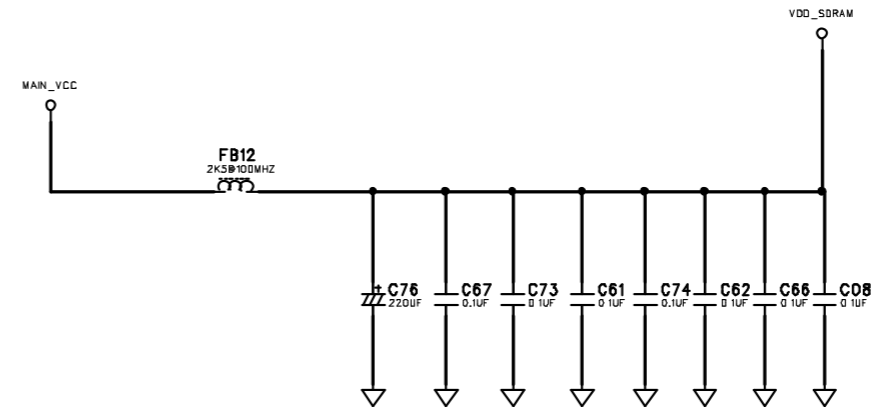
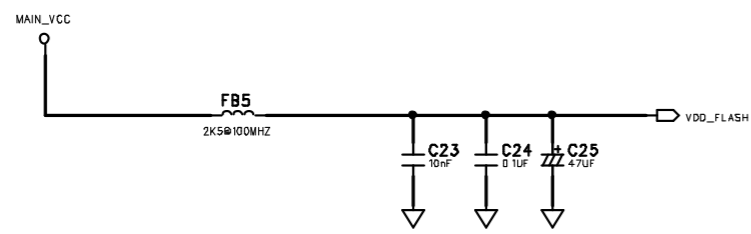
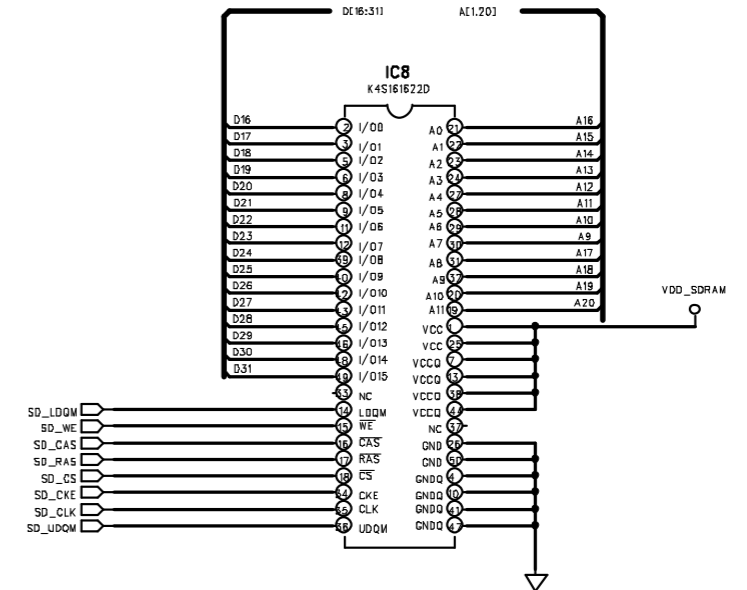
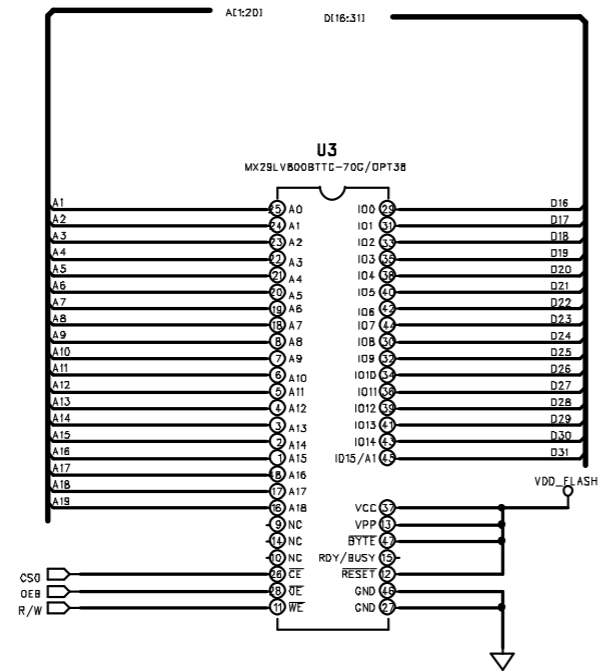
KEY0,KEY1,KEY2 RESISTOR VOLUME AS BELOW
KEY VOLUME 820ohm 1K3 3K6 4K7 10K



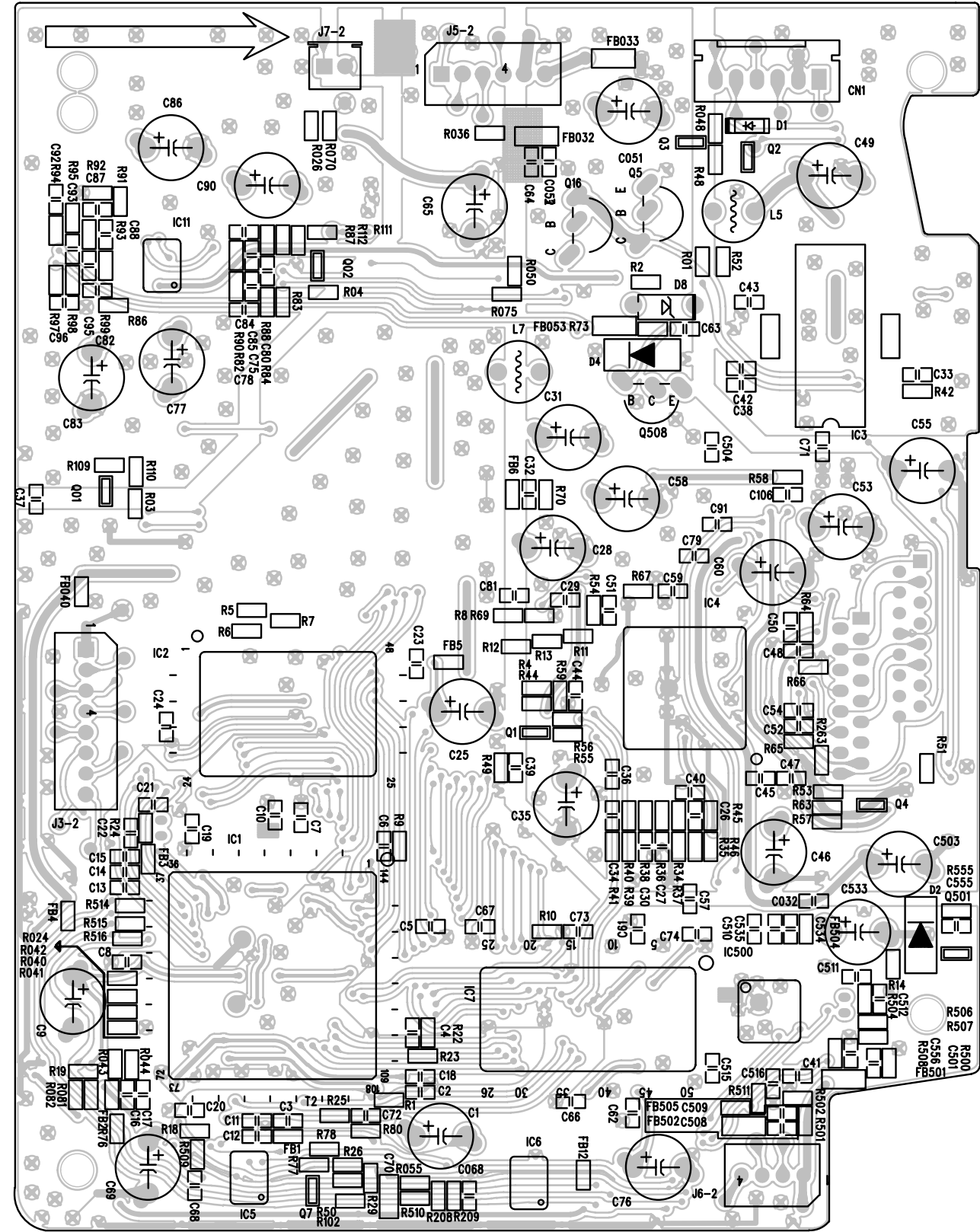
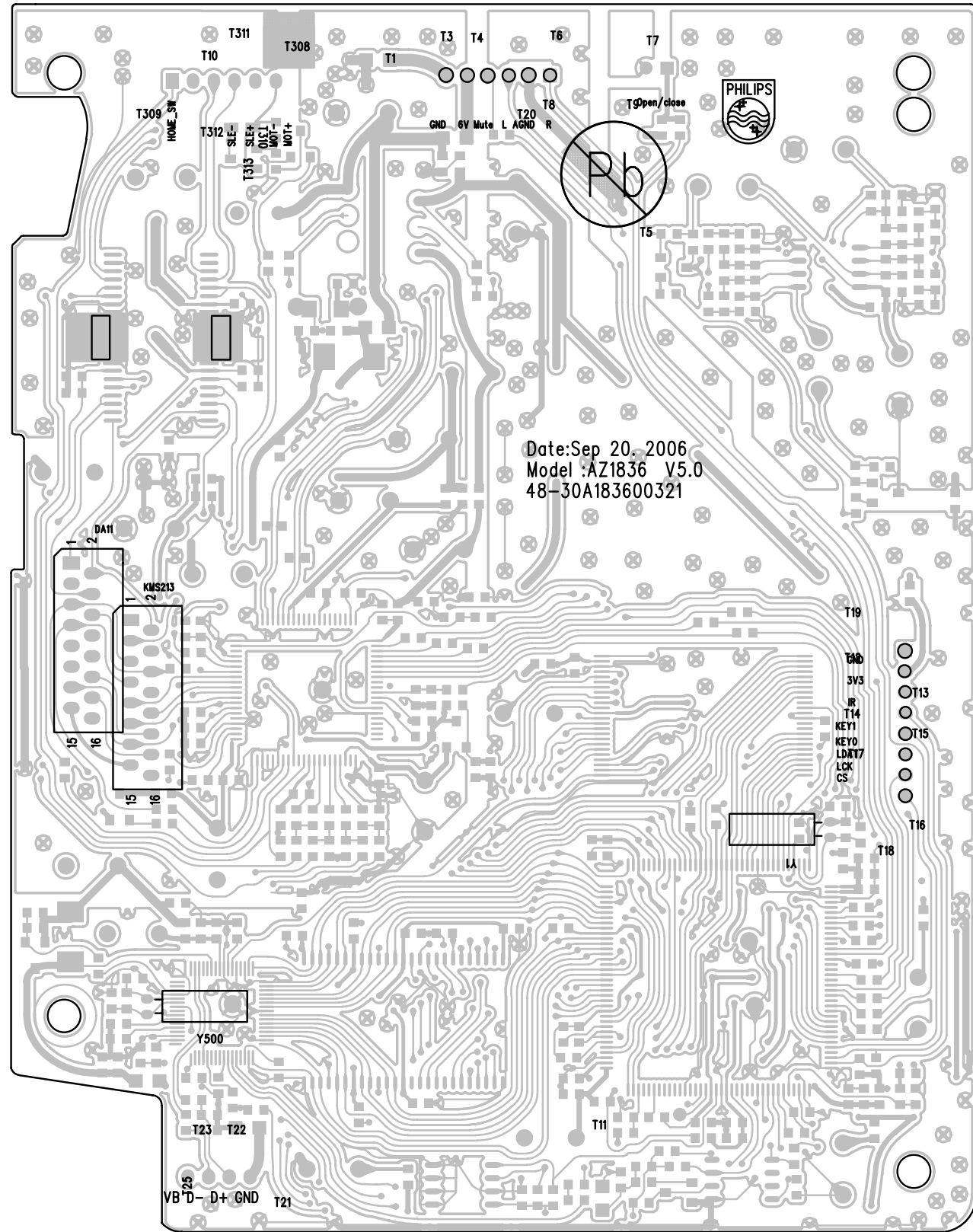
A20 pull down : audio clock taken from crin



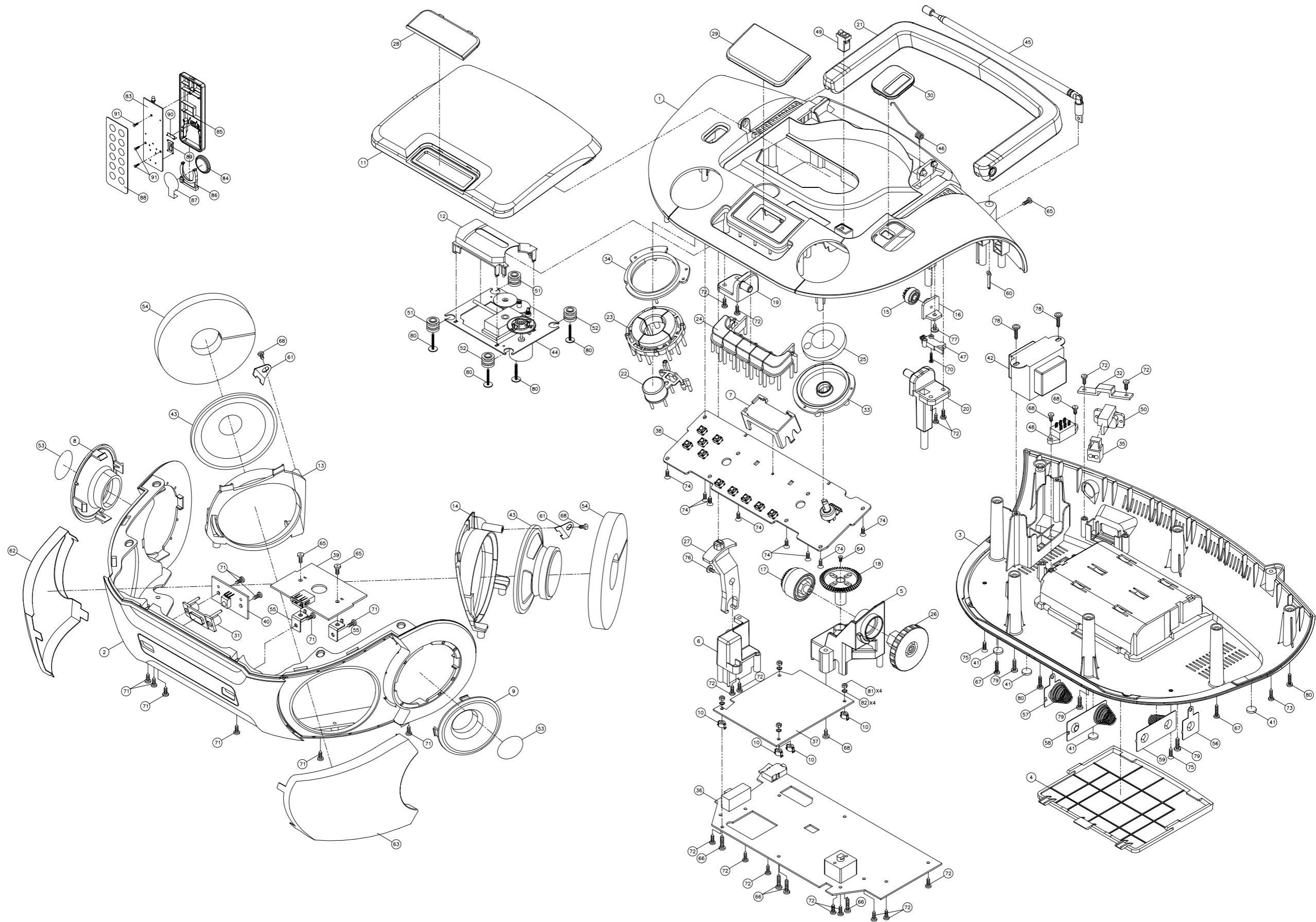
CIRCUIT DIAGRAM - CD BOARD
MP3 PART 2



LAYOUT DIAGRAM - CD BOARD



EXPLODED VIEW DIAGRAM



Service parts list for AZ1836/98

11	996510006646	MAIN BD ASSY
12	996510006647	KEY BD ASSY
13	996510006648	USB BD ASSY
14	996510006649	SENSOR BD ASSY
15	996510006650	CD/USB BD ASSY
16	996500042090	TRANSFORMER EI48 117/234V
17	994000005084	SPEAKER 3" 2W 8OHM
18	994000005085	CD MECHANISM DA11B3VZ (BALL)
19	994000001687	ROD ANTENNA 158-600MM
191	996510002910	16P FLAT FLEX CABLE
192	996510000860	SHOCK ABSORBER (658 TA 30C)
193	996510000861	SHOCK ABSORBER (658 TB 40C)
194	996500042091	CD DOOR SPRING
195	994000005087	BATTERY DOOR
196	996510002912	DAMPER GEAR
197	996510002913	DAMPER GEAR HOLDER
D	996510000423	REMOTE CONTROL ASS'Y "PHILIPS"
F	996500037714	AC CORD SET VDE/BRAZIL APP 1.8

SERVICE PARTSLIST FOR AZ1836B/55

- MISCELLANEOUS -

	994000005092	REMOTE CONTROL UNIT "PHILIPS"
⚠	996500037714	AC CORD SET VDE/APP 1.83M
⚠	996500042090	TRANSFORMER EI48 117/234V
	994000005084	SPEAKER 2W 8ohm JHD-YD78-29-1
	994000005085	CD MECHANISM (SANYO) DA11B3VZ
	994000001687	ROD ANTENNA 185~600mm #6158
	994000005086	DOOR LOCK #DSL-01B
	994000000505	SHOCK ABSORBER (658 TA 30C)
	994000000506	SHOCK ABSORBER (658 TB 40C)
	996500042091	CD DOOR SPRING
	994000005087	BATTERY DOOR
	996500042093	CD DOOR
	996500037712	HANDLE
	996500042092	VOLUME KNOB

SERVICE PARTSLIST FOR AZ1836W/85

- MISCELLANEOUS -

B	996510002911	CD DOOR ABS 433C
C	996510002912	DAMPER GEAR
CDM	994000005085	CD MECHANISM DA11B3VZ (BALL)
CORD	⚠ 994000001688	AC CORD SET CUL APP 6FT
D	996510002913	DAMPER GEAR HOLDER
E	996510002914	HANDLE FIXER L
F	996510002915	HANDLE FIXER R
FFC	996510002910	16P FLAT FLEX CABLE
G	996500037712	HANDLE
H	996510002916	CD DOOR LENS
I	994000000505	CD DAMPER 658 TA 30
J	994000000506	CD DAMPER 658 TB 40
K	996500042091	CD DOOR SPRING
LOCK	994000005086	DOOR LOCK #DSL-01B
PCB1	996510002907	MAIN BOARS PCB ASSY
PCB2	996510002908	CD/USB BOARS PCB ASSY
RC	996510002906	RC PART (WH) "AZ1836/85"
ROD	994000001687	ROD ANTENNA 158-600MM
SPE	994000005084	SPEAKER 3" 2W 8OHM
TRA	⚠ 996510002909	TRANS. EI48 120V HF-U48E11TM

Note: Only these parts mentioned in the list are normal service parts.